

# UDE-series

## Utility Drawer Economy

### Description:

The UDE-series of utility drawers feature fully welded construction of 16-gauge steel. The drawers mount to front rack rails using standard EIA spacing and feature ball-bearing slides for smooth operation. Drawers have a load capacity of 50 lbs. Smooth, black powder epoxy finish.

### Features:

- Fully-welded 16-gauge US steel.
- Ball-bearing slides.
- Mounts on front rails of 19"W EIA rack.
- Load Capacity: 50 lbs.
- Smooth black powder epoxy finish.
- Made in the USA.



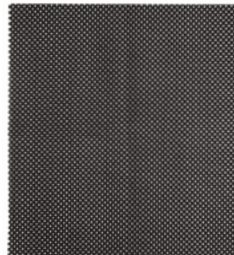
UDE utility drawers have a load capacity of 50 lbs.

### Options:

- **DFI-series:** drawer foam inserts are designed to protect sensitive equipment. Die-cut foam is pre-scored so you can "pick and pull" sections to create custom holes that keep accessories from jostling when drawer is opened and closed. Insert includes two pieces (die-cut foam plus 3/8" foam pad for bottom). 15.5" x 14". Fits UDE, UDEL and UDP-series drawers.
  - **DFI-2:** for 2U drawer
  - **DFI-3:** for 3U drawer
  - **DFI-4:** for 4U drawer
- **CDM:** the cabinet drawer mat is a non-slip, perforated liner that provides a protective barrier between electronics accessories and the drawer's metal surface. 15.5" x 14".



Protect sensitive electronics as shown here with the optional (DFI-series) foam insert.



Optional (CDM) non-slip cabinet drawer mat.

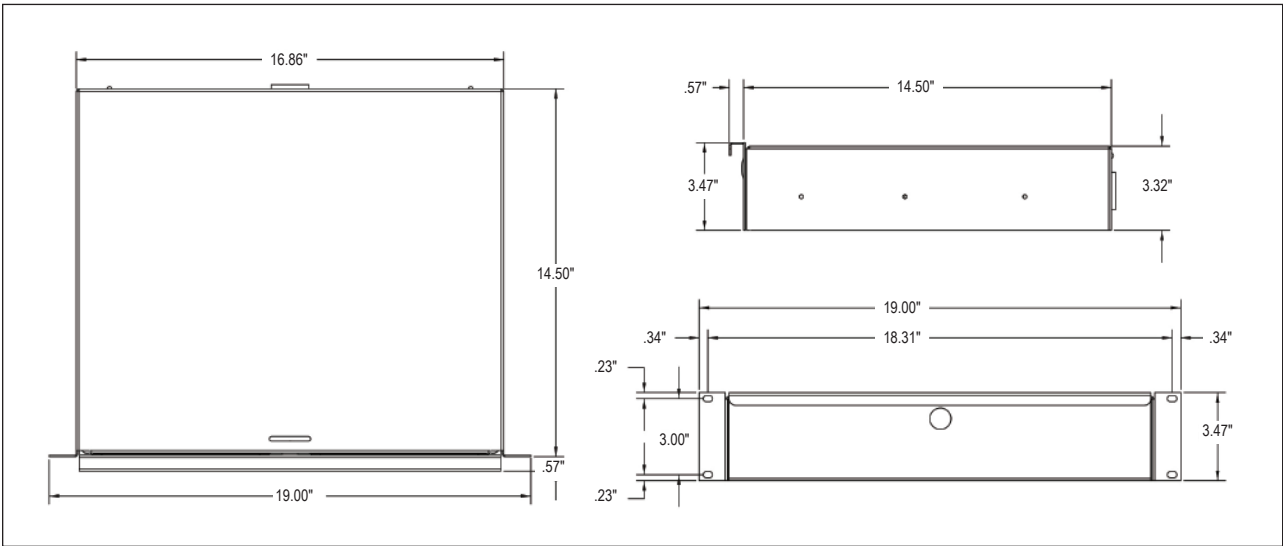
### A & E Specifications:

The rackmount utility drawer shall be Lowell Model \_\_\_\_\_. It shall have a panel space height of \_\_\_\_\_ and shall be fully-welded, 16-gauge steel with a black powder epoxy finish. The drawer shall feature ball-bearing slides and have a load capacity of 50 lbs.

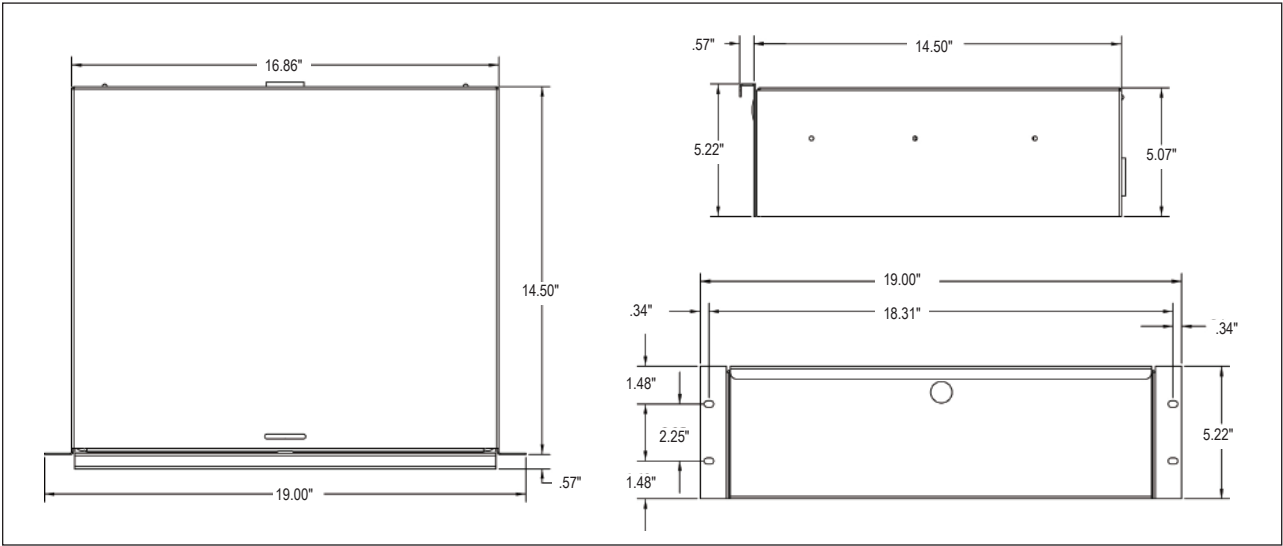
Model No.	Description	Rack Units	Depth	Overall Width
<b>DRAWERS:</b>				
UDE-214	Utility Drawer, Economy	2	14.5"	19"
UDE-314	Utility Drawer, Economy	3	14.5"	19"
UDE-414	Utility Drawer, Economy	4	14.5"	19"
<b>OPTIONS:</b>				
DFI-2	Drawer Foam Insert (for 2U drawer)			
DFI-3	Drawer Foam Insert (for 3U drawer)			
DFI-4	Drawer Foam Insert (for 4U drawer)			
CDM	Cabinet Drawer Mat			

1 rack unit = 1.75"

UDE-214



UDE-314



UDE-414

