

## MAXPRO® NVR XE (Xpress Edition)

www.honeywellvideo.com

### ENTRY LEVEL NETWORK VIDEO RECORDER (NVR)

Honeywell's MAXPRO® NVR XE is an ideal solution for entry into IP video surveillance systems. MAXPRO NVR XE utilizes Honeywell's HD cameras to offer a powerful high definition IP recording and security monitoring system for small installations. MAXPRO NVR XE has an open platform with broad integration with third party IP cameras and encoders. MAXPRO NVR XE offers the advantage of HD quality IP video but is as easy as a DVR to setup and operate for a seamless transition from analog to IP.

MAXPRO NVR XE is an open platform and supports broad third party device integrations with support for PSIA and ONVIF standards, real time streaming protocol (RTSP) standard and native device integrations. MAXPRO NVR XE provides easy to use desktop clients and mobile apps—MAXPRO® Mobile.

MAXPRO NVR XE comes pre-installed with all required software and is also pre-licensed for 16 channels allowing up to 16 cameras to be added anytime later as your system grows. This, along with an easy 3-Click wizard to live video for auto configuration, makes installing an IP system quick and efficient without requiring any IT expertise. Simple and logical configuration pages make setup a breeze even for the novice installer.

The MAXPRO NVR XE user interface is based on Honeywell's flagship MAXPRO® VMS user interface which offers a feature rich user experience and is common across the MAXPRO NVR Family. Utilization of this familiar interface allows for the "Learn One, Know Them All" concept that ensures familiarity across a broad range of Honeywell products saving training costs.

MAXPRO NVR XE supports simultaneous recording, live monitoring search and system management for up to 16 IP cameras including high definition formats. Multiple MAXPRO NVRs can be deployed for system expansion using a distributed architecture and integrated with the MAXPRO® Viewer multi-site software or MAXPRO® VMS enterprise video management system.

MAXPRO NVR XE utilizes powerful processor and memory technology supporting multiple simultaneous operations such as video recording and video viewing or alarm monitoring on the unit itself without the need for an additional workstation and also provides the option of remote monitoring. End users can view live video while simultaneously performing searches.

MAXPRO NVR XE also offers advanced features useful to entry level customers. Honeywell's patented Video Surround feature provides the ability to track subjects of interest as they move between areas covered by adjacent cameras by simply double-clicking on the panel where the subject is currently visible. Features such as the powerful preview search and film strip view allow for rapidly searching video for scenes of interest and then quick export method transfers video to an authenticated video clip playable through Windows Media player.

#### Market Opportunities

The continual growth of cost-effective IP networks and the demand for HD video offered by IP cameras have led to the need for entry level IP surveillance solutions. This has resulted in a strong demand for an all-IP end-to-end security system deployment. MAXPRO NVR XE provides an easy entry into IP-based systems and the operational power to address the needs of a wide variety of applications including healthcare clinics, small commercial and retail, property management and many other applications. When the need is for an easy to install, simple to use, and feature rich entry level network video recorder, the solution is MAXPRO NVR XE.

#### Key Benefits

- As easy to install and operate as a DVR – no IT expertise required
- Reduced security threats with HD quality video
- Quick to install – 3-Clicks to Live Video
- Local display – no PC needed
- Open – support for PSIA, ONVIF, RTSP standards and native device integrations
- Low cable cost – no homeruns of cable from camera to unit



HD

#### 3-Clicks to Live Video



# MAXPRO® NVR XE (Xpress Edition)

www.honeywellvideo.com

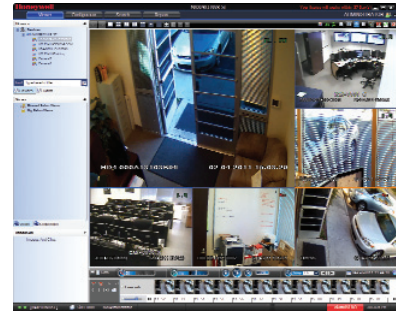
## FEATURES

### Software

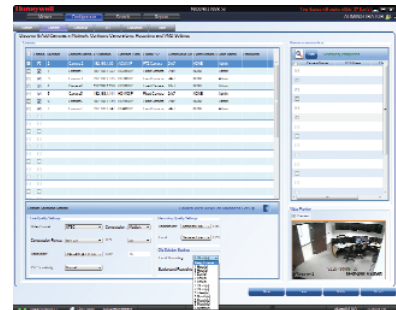
- MAXPRO NVR XE allows local or remote operations including live and recorded video monitoring, configuration and system management in a single desktop client interface.
- Support for mobile monitoring clients with MAXPRO Mobile apps.
- Broad device integrations: Honeywell cameras and encoders, third party devices with support for PSIA and ONVIF standards, RTSP standard and native device integration.
- Feature-rich, user-friendly Windows based interface to view HD video and configure system settings.
- Easy 3-click wizard to set up the system with auto-configuration and auto-discovery of IP cameras, recording and monitoring configuration—without any IP video expertise.
- Multi-zoom views on HD video. Example: Zoom in on a cash register in one view of the HD camera while at the same time monitoring the cash operator in the zoom out view of the HD camera.
- Ability to investigate events and alarms by simultaneously viewing alarm videos at various stages. For every alarm, users can view the video captured during pre-alarm, on-alarm, and post-alarm, and also view live video from the camera which triggered the alarm.
- Enriched video viewing experience through the intuitive video rendering engine that optimizes CPU utilization by altering the video frame rate.
- Honeywell's patented Video Surround feature simplifies the process of tracking subjects through a set of surrounding cameras.
- Create, save and name salvos under My Salvos or Shared Salvos.
- IP PTZ control and digital zoom on fixed cameras.
- Fast search by date/time, time line, time jump, bookmarks, preview, film strip view and events.
- Event history and operator log reporting with export in .pdf, Crystal Reports, Excel or Word.
- Capture and export clips and still images in simple .wmv and .bmp formats.
- Clips signed with digital signature for authentication.
- Supports multiple client connection to NVR Server.
- Separate event video and general recorded video retention times.
- Email notification on camera, system and operator events.
- Role-based operator privileges supporting Windows and local users.
- Utilizes camera-based analytics and I/Os to reduce stress on the processor.
- Keyboard control with UltraKey Plus and UltraKey Lite over Ethernet.
- Local and multi-language support.
- Multi-site support with MAXPRO Viewer.
- Integration with MAXPRO VMS.
- Integration with WIN-PAK® and Pro-Watch® Access Control Systems.

### Hardware

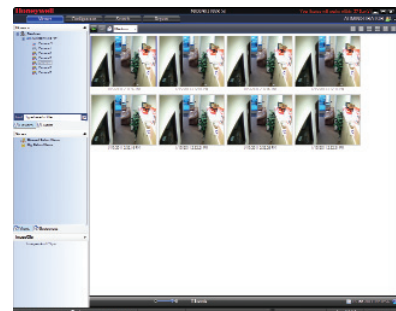
- Each unit records and monitors up to 16 cameras at 240 fps @ 4CIF or 80 fps @ 720p HD
- Includes a VGA output for local monitor providing access to monitoring and configuration interface (supports HD resolution)
- Supports displaying 16 cameras at one time on the NVR local monitor
- Internal storage capacity of 1 TB/2 TB – Video rated HDD
- DVD R/W drive for burning evidence clips
- Small desktop type footprint suitable for small spaces



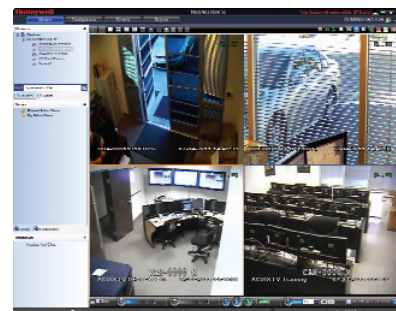
6 Split



Event Record



Preview

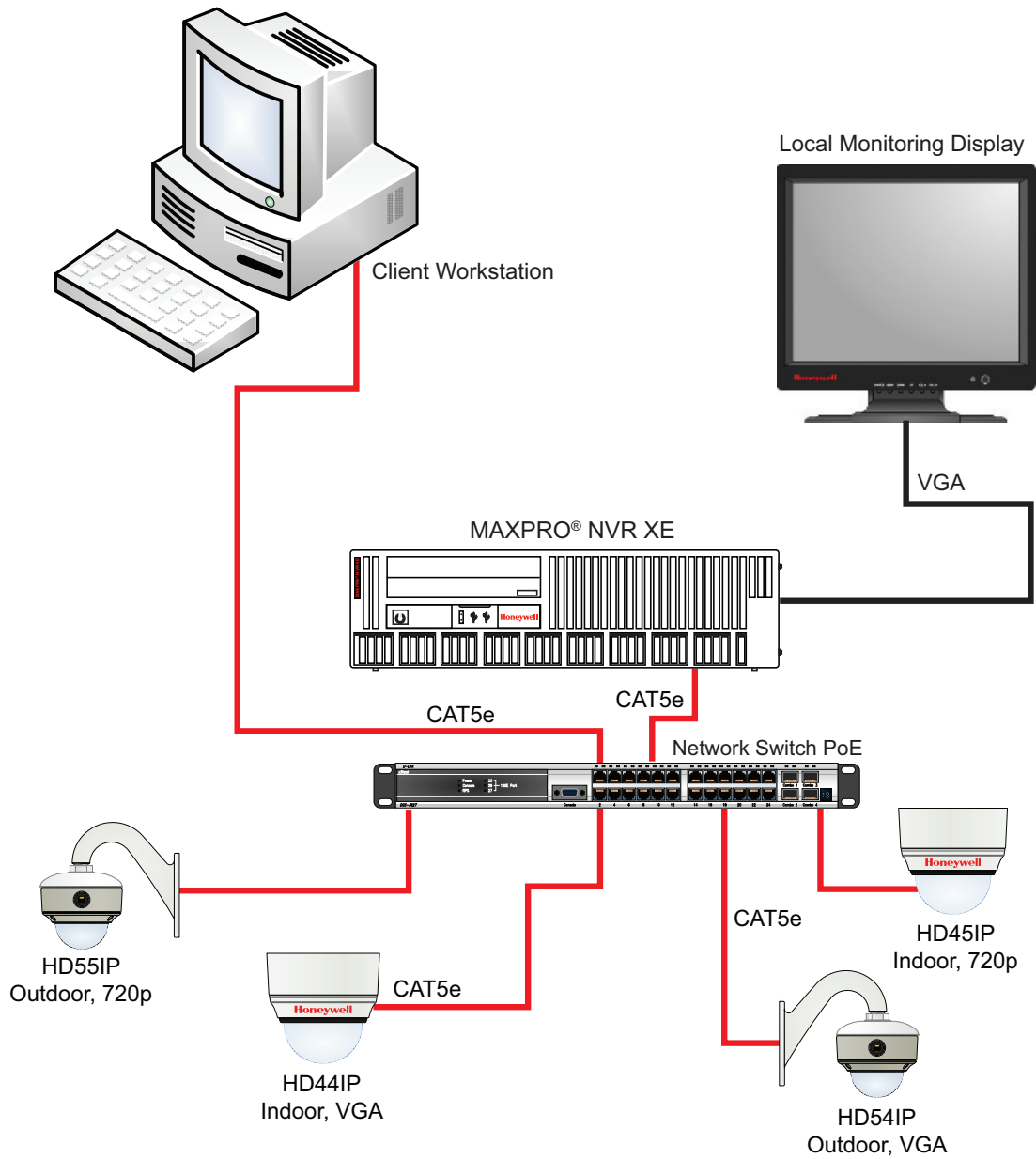


Quad

# MAXPRO® NVR XE (Xpress Edition)

[www.honeywellvideo.com](http://www.honeywellvideo.com)

## SYSTEM DIAGRAM



# MAXPRO® NVR XE (Xpress Edition) [www.honeywellvideo.com](http://www.honeywellvideo.com)

## SPECIFICATIONS

<b>Operational</b>	
<b>MAXPRO NVR XE Software</b>	
Database	Microsoft SQL Express 2008
Operating system	Windows Embedded Standard 7, 32-bit
Image compressions supported	MPEG-4, H.264
Supported Honeywell IP cameras and encoders	Supports Performance Series IP, EQUIP® Series cameras including high definition. Refer to <a href="http://www.honeywellsecurity.com/hota">www.honeywellsecurity.com/hota</a>
Supported third party IP cameras and encoders	Refer to the Honeywell Open Technology Alliance for a comprehensive list of compatible products to which this device is integrated. <a href="http://www.honeywellsecurity.com/hota">www.honeywellsecurity.com/hota</a>
Maximum number client connections	10 per unit
Salvo layouts	Full, 2x2, 1x5, 3x3, 2x8, 1x12, 4x4
Picture controls per camera	Sharpness, blur, brightness, contrast, hue, saturation, maintain aspect ratio, stretched, original size and picture mirror
OSD	Concealed text option
Playback controls per camera	FWD/REV Play x(1, 2, 4, 8, 16) Slow FWD/REV Play x (1/2, 1/4, 1/8)
Search types	Time/date timeline, time jump FWD/REV, bookmarks, preview, film strip and event search
Recording schedule	Constant and event based with H/M/D and holiday and exception days
Recording methods per camera	Constant, event-based and user activated
Live settings per camera	Compression format, resolution and frame rate
Recording settings per camera	Same as live or reduced frame rate
Clip format	WMV with digital certificate for authentication playable with Windows media player
Video clip authentication	Digital signature, verification tool provided
Motion detection location	Camera based
Event recording	Pre- and post-duration setting
Operator reporting	Per user, configurator, session and viewer
Event report	Per camera or recorder events
Operators	10

<b>Operational</b>	
<b>MAXPRO NVR XE Hardware</b>	
Processor	Intel® Pentium™ Dual Core E5300
Memory	4 GB
Power supply	Single 300W 88% Efficient PSU; Energy Star 5.0 compliant, Active PFC
Storage capacities	1 TB or 2 TB
Optical	16X DVD-RW
Network	Single 1 Gigabit Ethernet
Mouse and keyboard	USB
<b>Rear Panel Connections</b>	
USB	2 Front USB 2.0 ports 4 Rear USB 2.0 ports
Network	RJ45
Audio	1 Line-in/Microphone 1 Line-out
Monitor output	1 VGA
<b>Electrical</b>	
Input voltage	100- 240 VAC, 60/50 Hz
Operating voltage	110/220 VAC 60/50 Hz
Power consumption	300 W
<b>Mechanical</b>	
Construction finish	Chassis: Brushed steel Chassis: Black matte paint
Dimensions (w x h x d)	15.6" x 4.3" x 13.75" 396.5 mm x 109.3 mm x 349.1 mm
Weight	33 lb/15 kg base, varies by model
<b>Environmental</b>	
Operating Temperature	50°F to 113°F (10°C to 45°C)
Storage Temperature	-40°F to 140°F (-40°C to 60°C)
Relative Humidity	20% to 80% (non-condensing)
<b>Regulatory</b>	
Emissions	FCC: Part 15 Class B
Immunity	EN55024
Safety	UL/CSA 60950-1
<b>Warranty</b>	
Warranty and Advanced Replacements	Refer to <a href="http://www.honeywellvideo.com/support/warranty/index.html">http://www.honeywellvideo.com/support/warranty/index.html</a>

### Recording and Monitoring Performance

240 fps @ 4CIF or 80 fps @ 720p HD

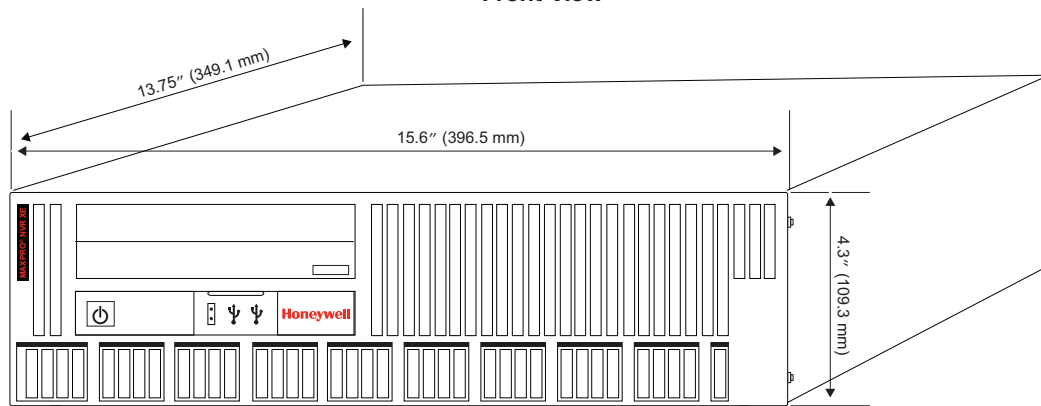
# MAXPRO® NVR XE (Xpress Edition) [www.honeywellvideo.com](http://www.honeywellvideo.com)

## SPECIFICATIONS

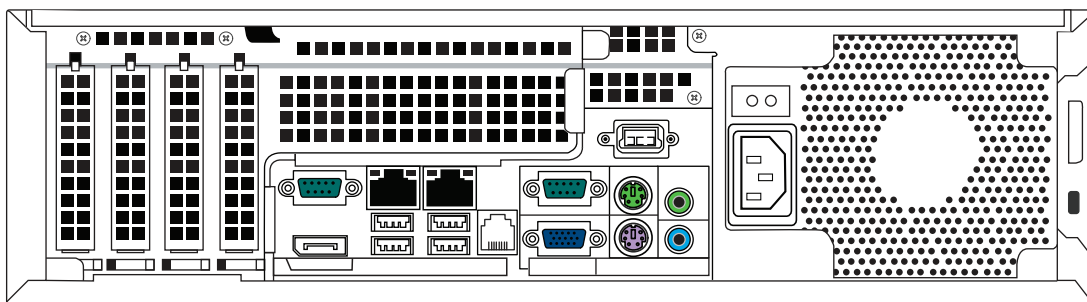
MAXPRO NVR Client Only Workstation—Minimum Specifications	
Processor	Intel® Core™ 2 Duo Processor E6750 2.66 GHz or Quad Core Intel® Xeon® E5405 2.0 GHz
System Memory (RAM)	Minimum 4 GB or Higher
OS & Application – Hard Disk Drive or Partition	Minimum 100 GB Partition drive or separate hard drive
Graphics Adapter	256MB or higher Display Card for Dual Monitor – Directx 9 Compatible
Network Interface	Minimum – 1 Gigabit network interface card
Optical Drive	DVD-RW
Monitor Resolution	Video resolution 1280x1024 pixels, 32 bit
Keyboard/Mouse	102-key keyboard and mouse
Operating System Options	Microsoft® Windows 7 Professional (32-bit and 64-bit), Microsoft® Windows Server 2008 R2

## SYSTEM DIMENSIONS

Front View



Rear View



# MAXPRO® NVR XE (Xpress Edition) [www.honeywellvideo.com](http://www.honeywellvideo.com)

## ORDERING

Ordering MAXPRO NVR XE	
HNMXE1	MAXPRO NVR XE 16 Ch, Local Monitoring Display, 1 TB, DVD-RW, GIG Ethernet
HNMXE2	MAXPRO NVR XE 16 Ch, Local Monitoring Display, 2 TB, DVD-RW, GIG Ethernet

Recommended Entry Level Cameras: Performance Series IP Cameras	
HD44IP	Network, Day/Night Indoor Fixed IP Dome, VGA Resolution Camera, H.264, PSIA Compliant
HD45IP	Network, Day/Night Indoor Fixed IP Dome, 720p Resolution Camera, H.264, PSIA Compliant
HD54IP	Network, Day/Night Rugged Fixed IP Dome, VGA Resolution Camera, H.264, PSIA Compliant
HD55IP	Network, Day/Night Rugged Fixed IP Dome, 720p Resolution Camera, H.264, PSIA Compliant

Refer to the storage calculator on [www.honeywellvideo.com](http://www.honeywellvideo.com) to help determine what size unit to order.

**NOTE:** Honeywell reserves the right, without notification, to make changes in product design or specifications.

### Automation and Control Solutions

Honeywell Systems  
2700 Blankenbaker Pkwy, Suite 150  
Louisville, KY 40299  
1.800.796.2288  
[www.honeywell.com](http://www.honeywell.com)



L/MXPRNVRXED/D  
March 2012  
© 2012 Honeywell International Inc.