

## MAXPRO® NVR SE (Standard Edition)

www.honeywellvideo.com

### 32-CHANNEL NETWORK VIDEO RECORDER (NVR)

Honeywell's MAXPRO® NVR SE is an open, flexible and scalable IP video surveillance system. Utilizing Honeywell's high definition cameras, MAXPRO NVR SE is a powerful, high definition IP recording system and viewing client for small to medium size installations. MAXPRO NVR SE is an open platform and supports broad third party device integrations with support for PSIA and ONVIF standards, real time streaming protocol (RTSP) standard and native device integrations. MAXPRO NVR SE provides easy to use desktop clients and mobile apps—MAXPRO® Mobile.

MAXPRO NVR SE comes pre-installed with all required software and is also pre-licensed for 32 channels. This, along with an easy 3-Click wizard to live video for auto configuration, makes installing an IP system quick and efficient without requiring any IT expertise. Simple and logical configuration pages make setup a breeze even for the novice installer.

The MAXPRO NVR SE user interface is based on Honeywell's flagship MAXPRO® VMS user interface which offers a feature rich user experience and is common across the MAXPRO NVR Family. Utilization of this familiar interface allows for the "learn one, know them all" concept that allows for familiarity across a broad range of Honeywell products.

MAXPRO NVR SE supports simultaneous recording, search, and system management for up to 32 IP cameras including high definition formats. Multiple MAXPRO NVRs can be deployed for system expansion using a distributed architecture and integrated with the MAXPRO® Viewer multi-site software or MAXPRO® VMS enterprise video management system.

MAXPRO NVR SE utilizes powerful processor and memory technology supporting multiple simultaneous operations such as video recording and video viewing or alarm monitoring. End users can view live video while simultaneously performing searches. MAXPRO NVR SE also offers advanced features. Honeywell's patented Video Surround feature provides the ability to track subjects of interest as they move between areas covered by adjacent cameras by simply double-clicking on the panel where the subject is currently visible. Features such as the powerful preview search and film strip view allow for rapidly searching video for scenes of interest and then quick export method transfers video to an authenticated video clip playable through Windows Media player.

#### Market Opportunities

The continual growth of IP networks and the demand for high definition video have led to the need for convergence of building security systems and IT systems for many companies across the globe. This has resulted in a strong demand for an all-IP end-to-end security system deployment. MAXPRO NVR SE provides an open, flexible and scalable system with operational power to address the needs of a wide variety of applications including education, commercial, retail, healthcare and many other applications. When the need is for an easy to install, simple to use, and feature rich network video recorder, the solution is MAXPRO NVR SE.



MAXPRO NVR SE **HD**



3-Clicks to Live Video

# MAXPRO® NVR SE

www.honeywellvideo.com

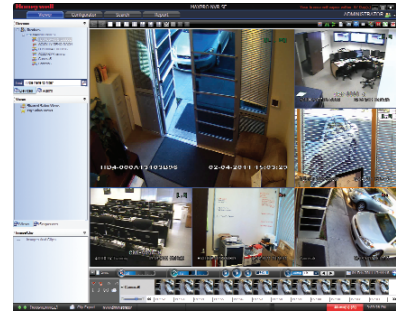
## FEATURES

### Software

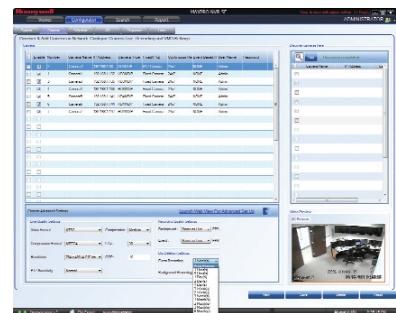
- MAXPRO NVR SE allows local or remote operations including live and recorded video monitoring, configuration and system management in a single desktop client interface.
- Support for mobile monitoring clients with MAXPRO Mobile apps.
- Broad device integrations: Honeywell cameras and encoders, third party devices with support for PSIA and ONVIF standards, RTSP standard and native device integration.
- Feature-rich, user-friendly Windows based interface to view HD video and configure system settings.
- Easy 3-click wizard to set up the system with auto-configuration and auto-discovery of IP cameras, recording and monitoring configuration—without any IP video expertise.
- Multi-zoom views on HD video. Example: Zoom in on a cash register in one view of the HD camera while at the same time monitoring the cash operator in the zoom out view of the HD camera.
- Ability to investigate events and alarms by simultaneously viewing alarm videos at various stages. For every alarm, users can view the video captured during pre-alarm, on-alarm, and post-alarm, and also view live video from the camera which triggered the alarm.
- Enriched video viewing experience through the intuitive video rendering engine that optimizes CPU utilization by altering the video frame rate.
- Honeywell's patented Video Surround feature simplifies the process of tracking subjects through a set of surrounding cameras.
- Create, save and name salvos under My Salvos or Shared Salvos.
- IP PTZ control and digital zoom on fixed cameras.
- Fast search by date/time, time line, time jump, bookmarks, preview, film strip view and events.
- Event history and operator log reporting with export in .pdf, Crystal Reports, Excel or Word.
- Capture and export clips and still images in simple .wmv and .bmp formats.
- Clips signed with digital signature for authentication.
- Supports multiple client connection to NVR Server.
- Separate event video and general recorded video retention times.
- Email notification on camera, system and operator events.
- Role-based operator privileges supporting Windows and local users.
- Utilizes camera-based analytics and I/Os to reduce stress on the processor.
- Keyboard control with UltraKey Plus and UltraKey Lite over Ethernet.
- Local and multi-language support.
- Multi-site support with MAXPRO Viewer.
- Integration with MAXPRO VMS.
- Integration with WIN-PAK® and Pro-Watch® Access Control Systems.

### Hardware

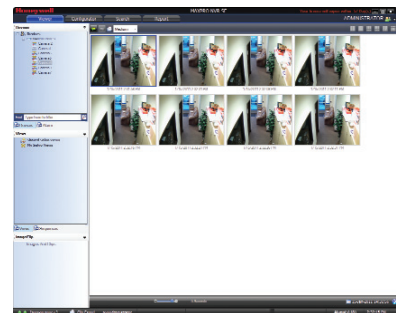
- Record and monitor up to 32 channels at 960 fps @ 4CIF or 640 fps @ 720p HD per MAXPRO NVR SE
- Includes a dual DVI/VGA graphics card for dual monitor support
- MAXPRO NVR SE supports displaying 16 cameras at one time, greater numbers of cameras can be displayed by adding additional client workstations
- 4 removable storage hard drives (optional 1 TB, 2 TB or 3 TB drives)
- Internal storage capacity from 1 TB to 12 TB
- Separate operating system hard drive from storage drives
- 22" depth chassis supports shallow racks



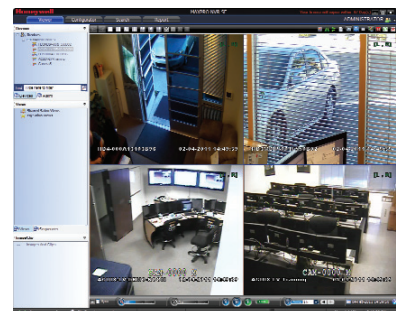
6 Split



Event Record



Preview

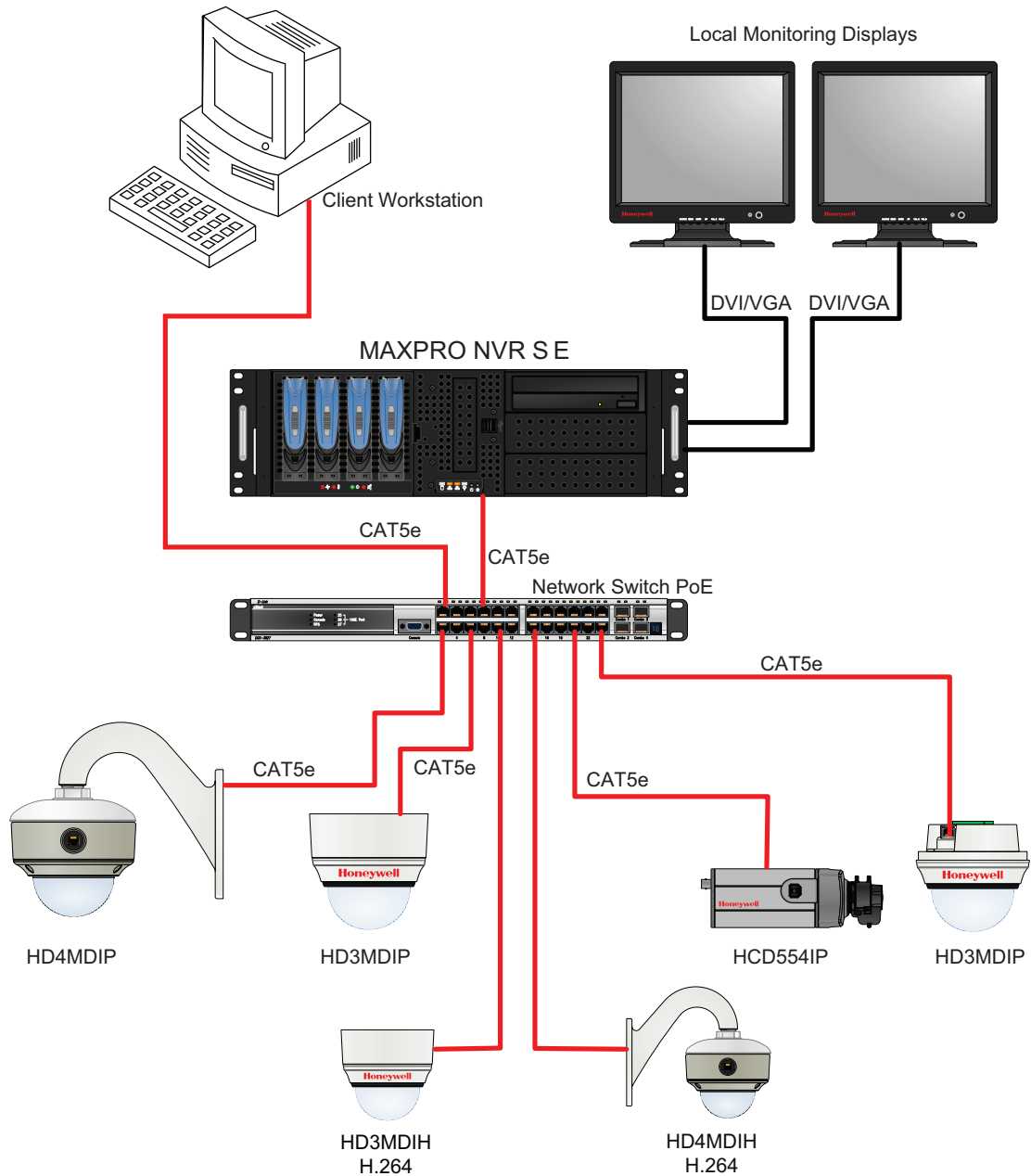


Quad

# MAXPRO® NVR SE

www.honeywellvideo.com

## SYSTEM DIAGRAM



## SPECIFICATIONS

<b>Operational</b>	
<b>MAXPRO NVR SE Software</b>	
Database	Microsoft SQL Express 2008
Operating system	Windows 7 Professional 32-bit, SP1
Image compressions supported	MPEG-4, H.264
Supported Honeywell IP cameras and encoders	Supports Performance Series IP, EQUIP® Series cameras including high definition. Refer to <a href="http://www.honeywellsecurity.com/hota">www.honeywellsecurity.com/hota</a>
Supported third party IP cameras and encoders	Refer to the Honeywell Open Technology Alliance for a comprehensive list of compatible products to which this device is integrated. <a href="http://www.honeywellsecurity.com/hota">www.honeywellsecurity.com/hota</a>
Maximum number client connections	10 per unit
Salvo layouts	Full, 2x2, 1x5, 3x3, 2x8, 1x12, 4x4
Picture controls per camera	Sharpness, blur, brightness, contrast, hue, saturation, maintain aspect ratio, stretched, original size and picture mirror
OSD	Concealed text option
Playback controls per camera	FWD/REV Play x (1, 2, 4, 8, 16) Slow FWD/REV Play x (1/2, 1/4, 1/8)
Search types	Time/date timeline, time jump FWD/REV, bookmarks, preview, film strip and event search
Recording schedule	Constant and event based with H/M/D and holiday and exception days
Recording methods per camera	Constant, event based and user activated
Live settings per camera	Compression format, resolution and frame rate
Record settings per camera	Same as live or reduced frame rate
Clip format	WMV with digital certificate for authentication playable with Windows media player
Video clip authentication	Digital signature, verification tool provided
Motion detection location	Camera based
Event recording	Pre and post duration setting
Operator reporting	Per user, configurator, session and viewer
Event report	Per camera or recorder events
Operators	10

<b>Operational</b>	
<b>MAXPRO NVR SE Hardware</b>	
Processor	Intel® Core™ 2 Quad Q9400
Memory	4 GB
Power supply	Single 460 W
OS hard drive	1x320 GB
Storage capacities	1 TB to 12 TB
Storage hard drive options	4 field-upgradable, 1, 2 or 3 TB hard drives
Optical	8x DVD, 24x CD
Network	Single 1 GB Ethernet included, Second optional 1 GB Ethernet card
Chassis with locking bezel	3U 4 bay including rack mount kit
Video card	NVIDIA NVS 290 x1, 256 MB
<b>Rear Panel Connections</b>	
Mouse and keyboard	2x PS2
USB	2x Front, 6x Back
Network	1xRJ45 included, optional (field installed) 2nd RJ45
Monitor output	1 x DVS-59 cable to 2 DVI + 2 DVI to VGA adapters
<b>Electrical</b>	
Input voltage	110/220 VAC 50/60 Hz
Operating voltage	110V/220V Auto Sensing
Power consumption	460 W
<b>Mechanical</b>	
Construction finish	Chassis: Brushed steel Chassis: Black matte paint
Dimensions (w x h x d)	19" x 5.25" x 22.25" 482.6 mm x 133.35mm x 565.15 mm
Weight	33 lb/15 kg base, varies by model
<b>Environmental</b>	
Temperature operating	32°F to 95°F (0°C to 35°C)
Relative Humidity	5-95% non-condensing
<b>Regulatory</b>	
Emissions	FCC part 15
Safety	UL 60950-1:2007; CSA C22.2 No. 60950-1:2007
<b>Warranty</b>	
Warranty and Advanced Replacements	Refer to <a href="http://www.honeywellvideo.com/support/warranty/index.html">http://www.honeywellvideo.com/support/warranty/index.html</a>

### Recording and Monitoring Performance

960 fps @ 4CIF or 640 fps @ 720p HD

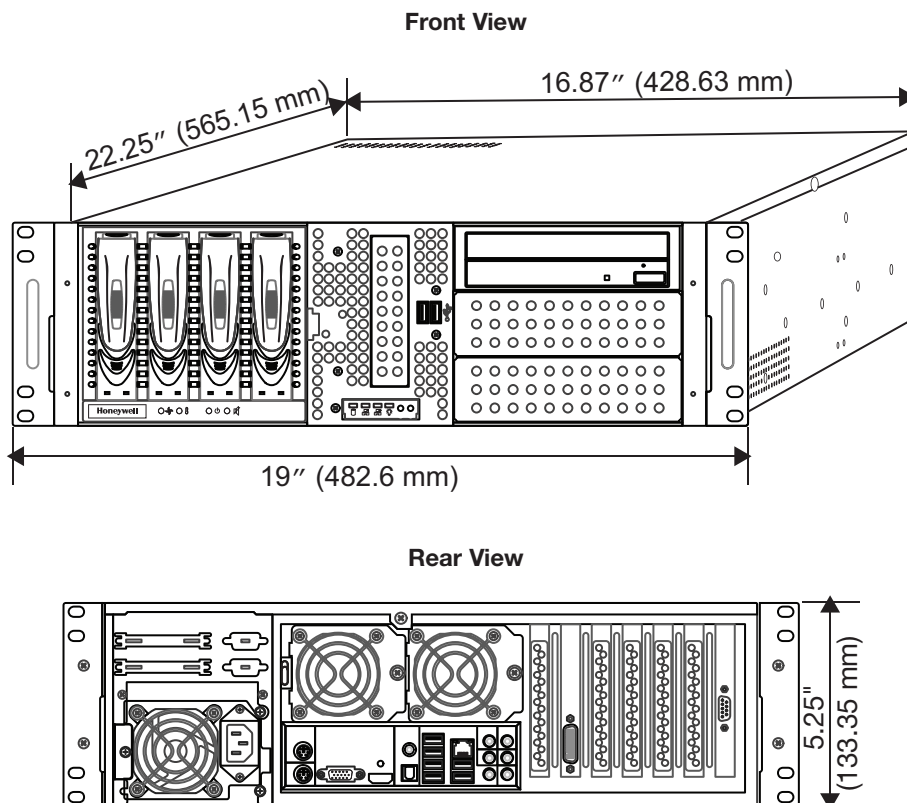
# MAXPRO® NVR SE

www.honeywellvideo.com

## SPECIFICATIONS

MAXPRO NVR Client Only Workstation—Minimum Specifications	
Processor	Intel® Core™ 2 Duo Processor E6750 2.66 GHz or Quad Core Intel® Xeon® E5405 2.0 GHz
System Memory (RAM)	Minimum 4 GB or Higher
OS & Application – Hard Disk Drive or Partition	Minimum 100 GB Partition drive or separate hard drive
Graphics Adapter	256MB or higher Display Card for Dual Monitor – Directx 9 Compatible
Network Interface	Minimum – 1 Gigabit network interface card
Optical Drive	DVD-RW
Monitor Resolution	Video resolution 1280x1024 pixels, 32 bit
Keyboard/Mouse	102-key keyboard and mouse
Operating System Options	Microsoft® Windows 7 Professional (32-bit and 64-bit), Microsoft® Windows Server 2008 R2

## SYSTEM DIMENSIONS



## ORDERING

Ordering	
HNM32N1T	MAXPRO NVR SE 32 Ch, NVR, 3U Rackmount, 1x1TB removable HD, 3x spare HD slots, DVD-RW, GIG Ethernet
HNM32N2T	MAXPRO NVR SE 32 Ch, NVR, 3U Rackmount, 2x1TB removable HD, 2x spare HD slots, DVD-RW, GIG Ethernet
HNM32N3T	MAXPRO NVR SE 32 Ch, NVR, 3U Rackmount, 1x3TB removable HD, 3x spare HD slots, DVD-RW, GIG Ethernet
HNM32N4T	MAXPRO NVR SE 32 Ch, NVR, 3U Rackmount, 2x2TB removable HD, 2x spare HD slots, DVD-RW, GIG Ethernet
HNM32N6T	MAXPRO NVR SE 32 Ch, NVR, 3U Rackmount, 2x3TB removable HD, 2x spare HD slots, DVD-RW, GIG Ethernet
HNM32N8T	MAXPRO NVR SE 32 Ch, NVR, 3U Rackmount, 4x2TB removable HD, DVD-RW, GIG Ethernet
HNM32N9T	MAXPRO NVR SE 32 Ch, NVR, 3U Rackmount, 3x3TB removable HD, 1x spare HD slots, DVD-RW, GIG Ethernet
HNM32N12T	MAXPRO NVR SE 32 Ch, NVR, 3U Rackmount, 4x3TB removable HD, DVD-RW, GIG Ethernet

Accessories	
HSPICENICW	1 GIG Ethernet, Second Network Interface Card - PCI
HNMHD1T0	1 TB SATA Raid Edition Hard Drive (Drive tray included with unit)
HNMHD2T0	2 TB SATA Raid Edition Hard Drive (Drive tray included with unit)
HNMHD3T0	3 TB SATA Raid Edition Hard Drive (Drive tray included with unit)

Refer to the storage calculator on [www.honeywellvideo.com](http://www.honeywellvideo.com) to help determine what size unit to order.

**NOTE:** Honeywell reserves the right, without notification, to make changes in product design or specifications.

### Automation and Control Solutions

Honeywell Systems  
2700 Blankenbaker Pkwy, Suite 150  
Louisville, KY 40299  
1.800.796.2288  
[www.honeywell.com](http://www.honeywell.com)

